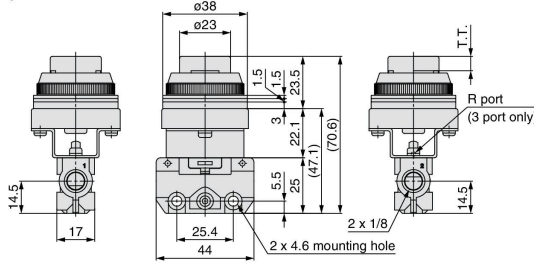


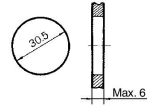
VM100 Series

VM100 Series/Side Ported

Push button (Extended)
 VM120-01-32 (R, B, G, Y) A
 VM130-01-32 (R, B, G, Y) A

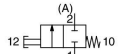


Panel mounting hole

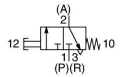


Symbol

2 port



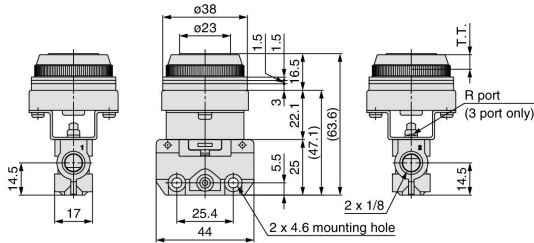
3 port



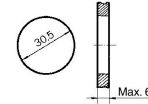
* 0.5 MPa supply

F.O.F.*	27 N
T.T.	6.5 mm

Push button (Flush)
 VM120-01-33A
 VM130-01-33A

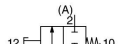


Panel mounting hole

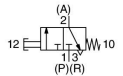


Symbol

2 port



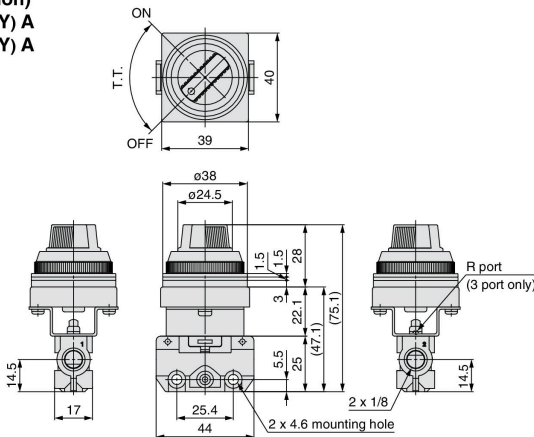
3 port



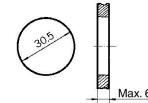
* 0.5 MPa supply

F.O.F.*	27 N
T.T.	6.5 mm

Twist selector (2 position)
 VM120-01-34 (R, B, G, Y) A
 VM130-01-34 (R, B, G, Y) A

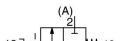


Panel mounting hole

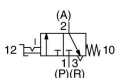


Symbol

2 port



3 port



* 0.5 MPa supply

F.O.F.*	15 N
T.T.	90°